

ELEVADO VANTAGE

All-Terrain Self-leveling



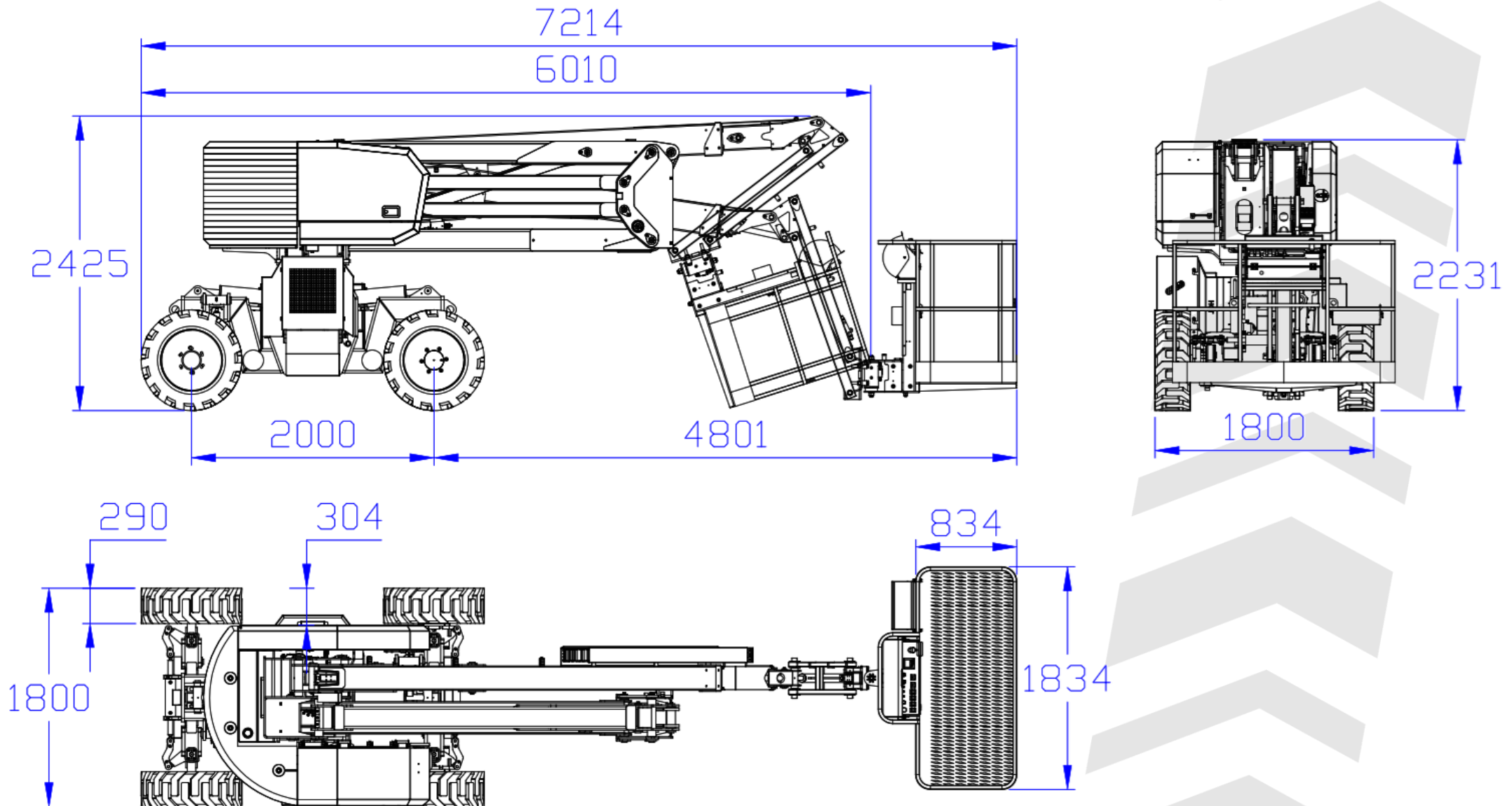
The ***ELEVADO VANTAGE*** series is being developed to service the hire and construction industry. It is a telescoping knuckle boom lift designed to handle the rough, sloping, and unprepared terrain found on outdoor construction sites.

What sets Elevado machines apart is their ability to self-level the wheelbase on the move, without the need for outriggers. This allows the operator to quickly reposition the machine without the downtime typically caused by challenging terrain.

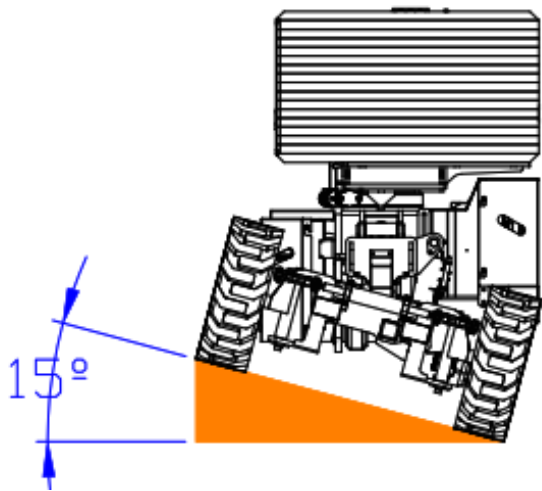
We have used the agricultural and forestry sectors to prove and refine the technology. It is now ready to be brought into the construction industry.

***The following images and specifications are of our prototype narrow hybrid machine. The standard base models will be diesel only and feature a (wider 2.25m) wheelbase.**

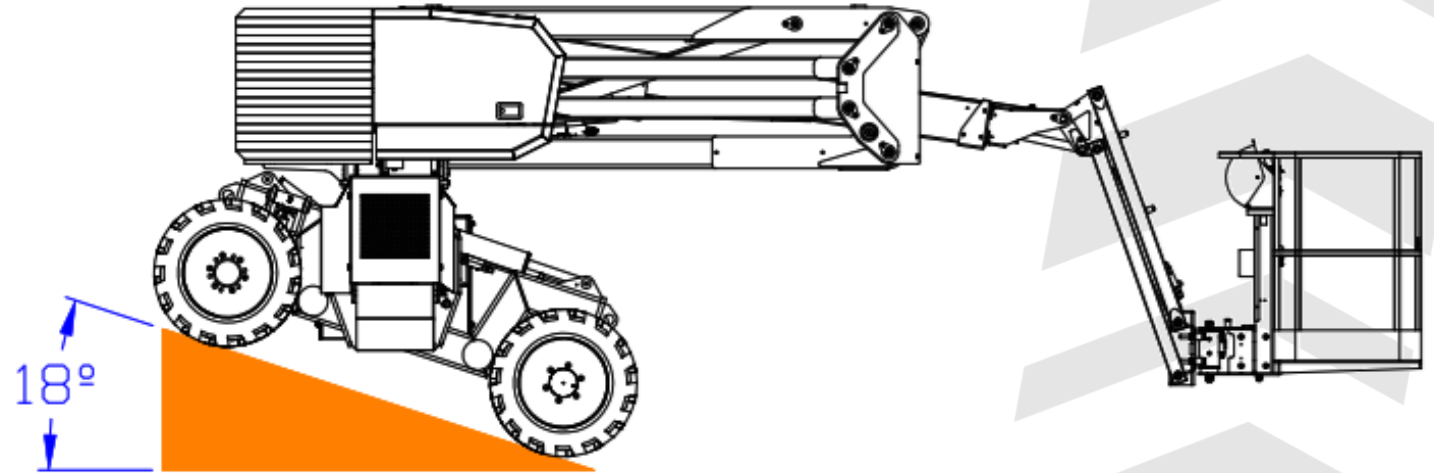
Machine Dimensions



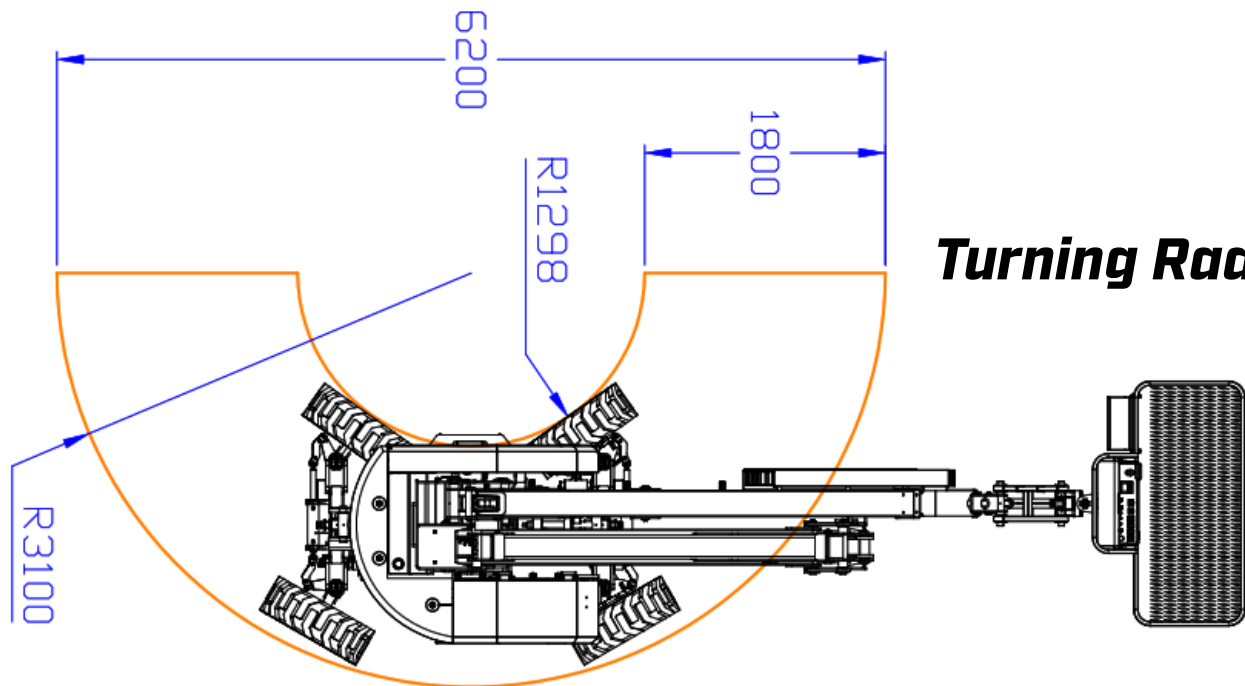
Self-Leveling Slope Capacity



Side-To-Side

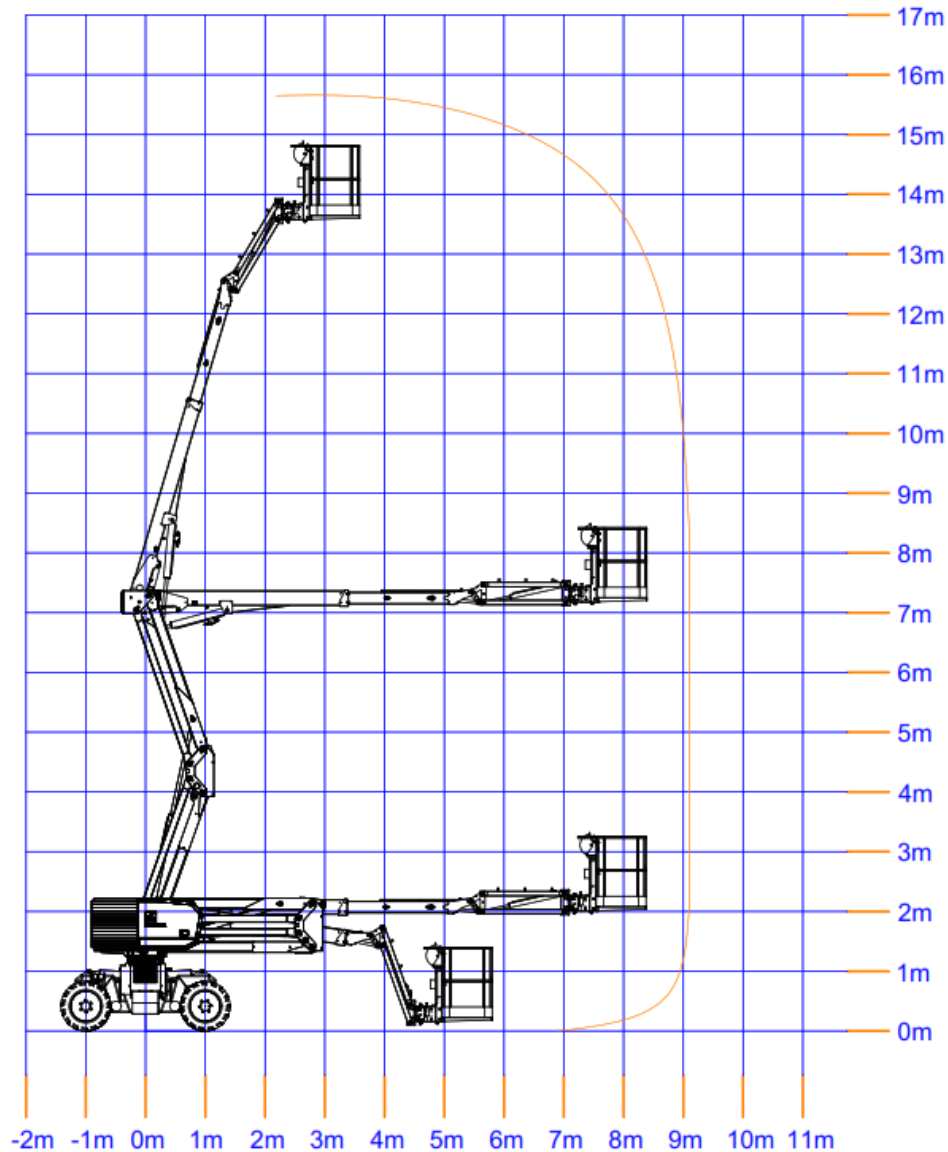


Front-To-Back



Turning Radius

Lift & Reach Dimensions



Specifications

Measurements	
Working height max	15.8m
Platform height max	13.8m
Horizontal outreach max	9.1m
Width	1.8m
Wheelbase	2m
Ground clearance	286mm
Machine weight	8500Kg
Performance	
Lift capacity	250kg
Platform slewing angle	180°
Boom rotation angle	346°
Jib articulation range	140° (70° raise / 70° lower)
Telescopic boom (stroke)	1650mm
Max Self-leveling	18° front to back (650mm) 15° side to side (483mm)
Max drive speed	5km/h
Drive	4WD
Steer	4 Wheel steer
Tyres	Solid
Powertrain (Diesel Hybrid)	
Engine	Kubota 26Hp Diesel
Diesel Tank	65L
Battery Capacity	48V 240AH Lithium

